

NOTES:

- 1) PROFILE DRAWING OF PART LISTED, DRAWINGS ARE SUBJECT TO CHANGE AT ANYTIME DUE TO MANUFACTURING MODIFICATIONS
- 2) ALL PROFILES ARE EXTRUDED ALUMINUM, SAW CUT TO STANDARD LENGTHS (12")
- 3) ADDITIONAL LENGTH UPON CUSTOMER REQUEST AND SUBJECT TO APPROPRIATE LEAD TIMES
- 4) FACTORY CUT LENGTHS MAY BE OVERSIZED TO ALLOW PROPER SITE TRIMMING/COLOUR PROCESSES
- 5) ALL PROFILES FINISHED WITH SUBLIMATION WOOD GRAIN OR SOLID POWDER COAT COLOUR TO CUSTOMER COLOUR SELECTION
- 6) PROFILES CAN BE CUT USING MITER SAW FIT WITH NON-FERROUS METALS BLADE, PROTECT SURFACE ADJACENT TO CUT (MASKING TAPE)
- 7) CUT/EXPOSED PROFILE ENDS CAN BE COATED WITH LIGHT OR DARK TOUCH UP PAINT PENS

Luxyclad

Division of Decora Powder Coatings Ltd.
24 Benfield Drive, St. Catharines, Ontario L2S 3V5
Telephone: 877-255-1022 Email: info@luxyclad.com

The information contained on this drawing is protected by copyright, patent and other laws and is the exclusive property of LUXYCLAD and may not be passed to third parties without the written permission from an authorized LUXYCLAD officer.

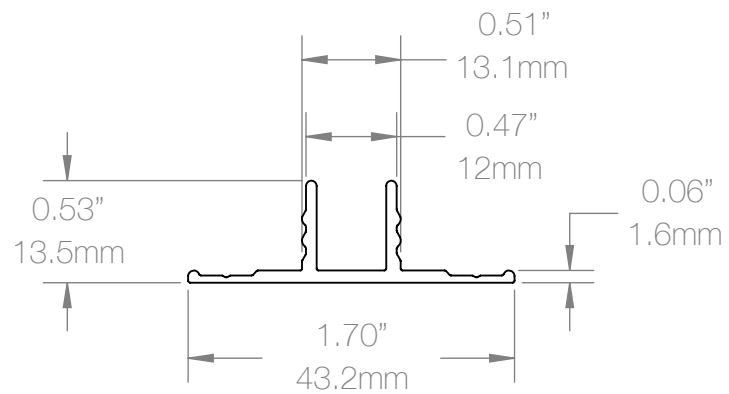
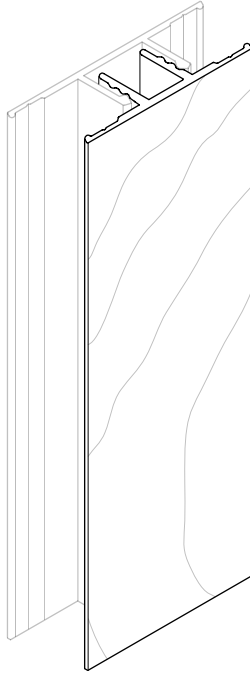
REVISION: 00
FINISH/COATING: PER P.O.
MATERIAL: 6063-T5 ARCHITECTURAL
WEIGHT(LB/FT): 0.18
DATE: 2/1/18
UNLESS OTHERWISE NOTED ANGULAR TOLERANCE $\pm 1.0^\circ$
UNLESS OTHERWISE NOTED ALUMINUM ASSOCIATION TOLERANCES APPLY
DEBUR AND BREAK ALL CUT/SHARP EDGES
PRINT ON 8.5"x11" DO NOT SCALE DRAWING

DWG NO.:

A-25468-A

DESCRIPTION:

DECORA, FLAT
TRIM BASE



NOTES:

- 1) PROFILE DRAWING OF PART LISTED, DRAWINGS ARE SUBJECT TO CHANGE AT ANYTIME DUE TO MANUFACTURING MODIFICATIONS
- 2) ALL PROFILES ARE EXTRUDED ALUMINUM, SAW CUT TO STANDARD LENGTHS (12')
- 3) ADDITIONAL LENGTH UPON CUSTOMER REQUEST AND SUBJECT TO APPROPRIATE LEAD TIMES
- 4) FACTORY CUT LENGTHS MAY BE OVERSIZED TO ALLOW PROPER SITE TRIMMING/COLOR PROCESSES
- 5) ALL PROFILES FINISHED WITH SUBLIMATION WOOD GRAIN OR SOLID POWDER COAT COLOR TO CUSTOMER COLOR SELECTION
- 6) PROFILES CAN BE CUT USING MITER SAW FIT WITH NON-FERROUS METALS BLADE, PROTECT SURFACE ADJACENT TO CUT (MASKING TAPE)
- 7) CUT/EXPOSED PROFILE ENDS CAN BE COATED WITH LIGHT OR DARK TOUCH UP PAINT PENS

Luxyclad

Division of Decora Powder Coatings Ltd.
24 Benfield Drive, St. Catharines, Ontario L2S 3V5
Telephone: 877-255-1022 Email: info@luxyclad.com

The information contained on this drawing is protected by copyright, patent and other laws and is the exclusive property of LUXYCLAD and may not be passed to third parties without the written permission from an authorized LUXYCLAD officer.

REVISION: 00
FINISH/COATING: PER P.O.
MATERIAL: 6063-T5 ARCHITECTURAL
WEIGHT(LB/FT): 0.17
DATE: 2/9/18
UNLESS OTHERWISE NOTED ANGULAR TOLERANCE $\pm 1.0^\circ$
UNLESS OTHERWISE NOTED ALUMINUM ASSOCIATION TOLERANCES APPLY
DEBUR AND BREAK ALL CUT/SHARP EDGES
PRINT ON 8.5"x11" DO NOT SCALE DRAWING

DWG NO.:

A-26106-A

DESCRIPTION:

DECORA, FLAT
TRIM CAP